



INTERIORS

NEW COLLECTION JANUARY 2021

Doubling up: two of everything

The entire Loro Piana Interiors collection
for 2021 revolves around the concept of
doubling up



NEW BOOKS AND FOLDERS:

Drapes II
Rustic Blends II
Cotton Moleskin – Folder Maremma
Fancy Wools II
Passepartout IV
Dehors IV
Passepartout III – Folder Regis
Ready Made Folders (Oasis, Essential, Venice)





Lhasa
Newari
Dharma
Kora

SKU: CBDWOOL21



Newari AWWI050RS - 100% ww



001 Ghurka



002 Cammello



003 Light Marengo



004 Natural Brown

Dharma AWWI1050ARS - 100% ww



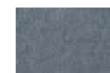
101 Ghurka



102 Natural Brown



103 Light Marengo



104 Crepuscolo

Lhasa AWWI050CRS - 100% ww



301 Marengo



302 Brown



303 Natural Brown



304 Serenata

Kora AWWI050BRS - 100% ww



201 Marengo



202 Brown



203 Cammello



204 Serenata



Newari and **Lhasa** are double wool fabrics with geometric, two-tone motifs on both sides. **Kora** features a delicate floral design, while **Dharma** offers up a refined paisley. All four are available in four different shades, designed to create combinations that play with warm mélange tones and patterns. Perfect for curtains and light upholstery.



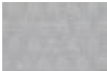
Samarcanda
Balthazar
Damask
Limoges
Eolo
Espero
Arles
Ghibli
Afriko
Tangerine

SKU: CBDRAPE21



The light glows through the lightest of jacquard weave linens, and the interior embraces a refined natural palette. The windows are dressed in **Ghibli**, a pure linen in six shades with a delicate positive/negative floral pattern, while **Afriko** presents an irregular geometric pattern, also with a positive/negative effect. These exquisitely airy fabrics drape richly yet are sheer enough to create a harmonious play of light.

Ghibli AL2058 - 100% li



001 Light Grey



002 Cammeo



003 Sitatunga



004 Ecrù



005 Malachite

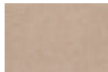


006 Tundra

Afriko AL2059 - 100% li



001 Light Grey



002 Cammeo



003 Sitatunga



004 Ecrù



005 Malachite



006 Tundra



Linen softly filters the light from the garden, through double fabrics that are crafted using complex techniques to produce two layers that are nonetheless cool and airy. **Arles** features coloured stripes against a white background, in a different shade on each side, giving rise to subtle contrasts. **Espero** is another double linen fabric: in solid colours, different on each side. Both are perfect to combine with the 10 colourways of **Eolo**, a single layer of ultra-fine linen, and the linen fabric **Tangerine**. All three come in a 3 metre width, ideal for lavish drapes. **Arles** and **Espero** can also be used for cushions.

Arles AL2054 - 100% li



001 Aqua - Spago

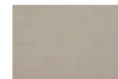


002 Cammeo - Light Grey

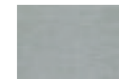
Espero AL2053 - 100% li



001 Biancore - Shaded White



002 Kasha - Light Grey



003 Aqua - Betulla

Eolo AL2052 - 100% li



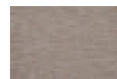
001 Shaded White



002 Ecrù



003 Kasha



004 Taupe



005 Cammeo



006 Aqua



007 Polvere



008 Grey



009 Light Grey



010 Betulla

Tangerine AL2057 - 80 li - 13% co - 5% pc - 2% pl



001 Shaded White



002 Ecrù



003 Madreperla



004 Crepuscolo

Wool and silk dress windows in the form of the new **Damask** fabric, in a 160 cm width with a contrasting 16 cm silk grosgrain border. This is a new departure for Loro Piana Interiors, a material created primarily for elegant curtains, available in ready made panels. The width of the border can be adapted simply by folding it.

Damask AWVS1048 - 68% ww 32% se



001 Adularia-Giada



002 Adularia-Oro Rosa



003 Adularia-Tormalina



004 Agata Grigia-Tanzanite



005 Agata Grigia-Topazio



006 Eosite-Corniola

16 cm gros grain border along one selvedge





Balthazar is a jacquard weave silk shantung and cotton fabric featuring wide diagonal stripes with slightly irregular borders in four different shades, set against an ivory background. Very full-bodied, with a firm consistency that recalls couture fabrics, it is mainly designed for drapes or panel curtains, where the diagonal stripes can be combined to create a maxi chevron pattern. Also perfect for cushions and light upholstery. **Samarcanda** is the solid colour version, in five shades, 210 cm width, a brand new addition to the collection. **Limoges**, an ultra-light blend of cashmere, silk and linen, in a 3 metre width, rounds off the selection of elegant curtains. Boasting a rich, fluid drape, it comes in white and ecru and is designed to be layered under heavier curtains.

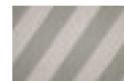
Balthazar ASI013 - 80 se 20% co



001 Adularia



002 Oro Rosa



003 Opale Nobile



004 Giada Imperiale

Limoges AWSI0353 - 44% li 39% ws 17% se



001 Shaded White



002 Ice

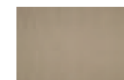
Samarcanda ASI012 - 80% se 20% co



001 Quarzo Bianco



002 Adularia



003 Oro Rosa



004 Tormalina



005 Giada Imperiale

A new format for the sample book to give the right visibility to the patterns and textures





SKU: CBDEH4

Dehors Malibu
Dehors Antibes

Dehors Antibes and **Malibu** combine solid colours and a canneté weave with a two-tone geometric motif. The silky soft consistency is bound to come as a surprise, in a resilient technical fabric like polypropylene that stands up to the elements. This is thanks to the carefully chosen yarn, which undergoes numerous finishing processes to enhance the look and feel of a material with outstanding stain-resistant, anti-bacterial and anti-fungal properties. The water-less dye process used reduces its environmental impact and the fibre can be recovered and recycled indefinitely to produce other materials.



Dehors Antibes AD9010 - 100% pp



001 Ecrù



002 Zen



003 Cammeo



004 Aqua



005 Graphite

Dehors Malibu AD9009 - 100% pp



001 Absolute White



002 Biancore



003 Zen



004 Cammeo



005 Aqua



SKU: CBCOTTON21



SKU: FOLMAREMMA

Maremma is a new, highly durable cotton moleskin in a wide range of colours.

Maremma AC3024 - 100% co				
				
001 Biancore	002 Zen	003 Taupe	004 Shaded Brown	005 Dark Zen
				
006 Granello di Pepe	007 Becco d'Oca	008 Havana	009 Cowes	010 Diaspro
				
011 Green Blue	012 Lovat	013 Eucalyptus	014 Polvere	015 Avio
				
016 Serenata				



SKU: CBRAWB21

Bukhara Plain
Bukhara Stripe



Bukhara is a blend of wool, linen and cotton, available in solid colourways or with discreet irregular stripes in tonal shades to mix and match for characterful upholstery. The fabric is produced using bouclé yarns that lend texture and movement to the surface.

Bukhara Plain AL2055 - 42% li 30% co 23% wo 5% pl

				
001 Biancore	002 Taupe	003 Palomino	004 Ghurka	005 Brick
				
006 Gascogne	007 Camargue	008 Lovat	009 Denim	

Bukhara Stripe AL2056 - 42% li 30% co 23% wo 5% pl

				
101 Shaded White	102 Palomino	103 Camargue	104 Taupe	105 Brick

Regis
Crillon



SKU: CBDEH20



SKU: FOLREGIS

The contract collection features two new products: the flame-retardant curtain fabric **Crillon**, in printed polyester yarn - each bobbin is different, producing unique, ever-different effects - with a very interesting handle reminiscent of the crunchy texture of linen. Channelling the theme of the collection, this is a double-sided, two-tone fabric.

Lastly, we come to the unexpectedly softness of the polyester velvet **Regis**, also flame-retardant and ideal for theatres, cinemas and concert halls, available in 12 shades.

Crillon FR AT8031 - 100% pl fr



001 Light Grey



002 Sitatunga



003 Camargue

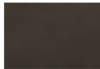
Regis FR AT8030 - 100% pl fr



001 Shaded Cloud



002 Zen



003 Dark Zen



004 Aqua



005 Green Blue



006 Forrest



007 Midnight



008 Olivo



009 Aubergine



010 Amaranto



011 Borioso



012 Becco d'Oca



Pure wool is also used for the **Oasis** throws and cushions, making its debut in this collection. Soft to the touch, relaxed and versatile, with geometric designs that vary according to the shade, each side of the double fabric features a different motif. Designed to be used together.

Folders: (SKU: FOLAOSIS, FOLESSANT, FOLVENICE)



Venice is a quilt in silk shantung and cotton lined in fine, super-soft Wish® wool and filled with “Heart of Cashmere”, a warm, airy-light wadding produced using cashmere offcuts, to ensure that none of this prized fibre goes to waste: a precious contribution to a very refined decor item. The subtly contrasting stitching picks up the shade of the inner side.



Refined colour contrasts also grace the **Essential** cushions and throws in ultra-soft double wool and cashmere fabric. The fabric is produced in a double layer directly on the loom and is fully splittable, to enable it to be crafted using the double construction technique, namely opened along the edges, then the two layers folded inwards and stitched by hand, ensuring an invisible finish.